

Some Basic Trussed Rafter Profiles

A Trussed Rafter Association Product Data Sheet
Sheet No.2



Harlow

TIMBER SYSTEMS

Harlow Timber Systems Ltd
Walker Rd
Forest Business Park
Bardon Hill
Coalville
Leicestershire
LE67 1TU

t 01530 516990

f 01530 516991

e hts@harlowts.co.uk

w www.harlowts.co.uk

Registered No 1801353 England

Vat No 395 6607 09



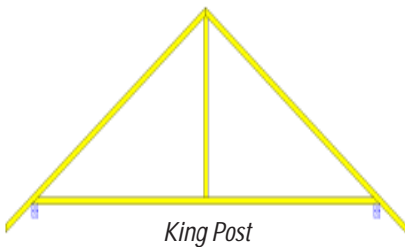


Trussed Rafter Association

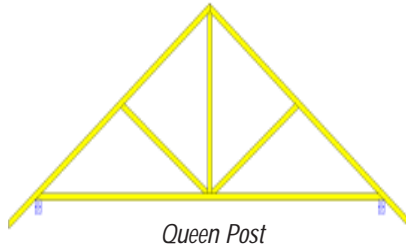
Product Data Sheet

Sheet No.2 - December 2000

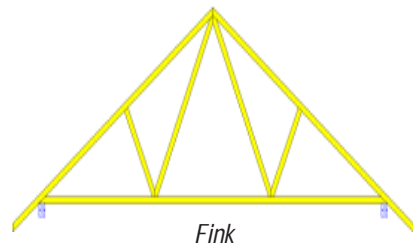
Some Basic Trussed Rafter Profiles



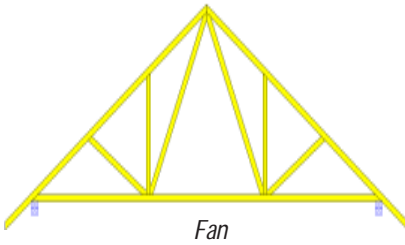
King Post



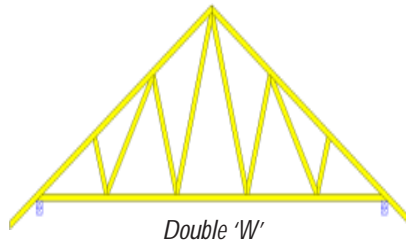
Queen Post



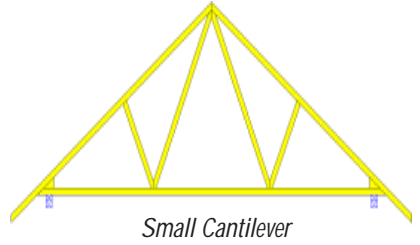
Fink



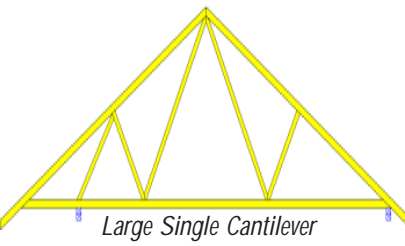
Fan



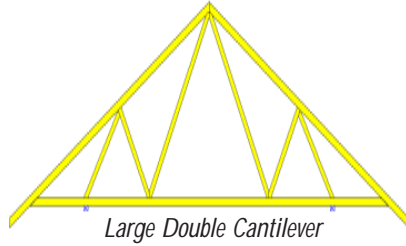
Double 'W'



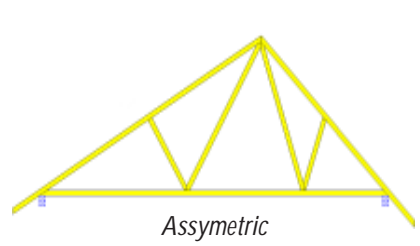
Small Cantilever



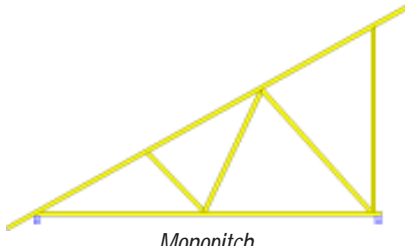
Large Single Cantilever



Large Double Cantilever



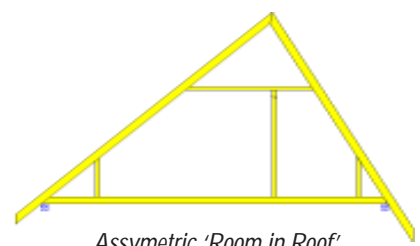
Assymetric



Monopitch



'Room in Roof'



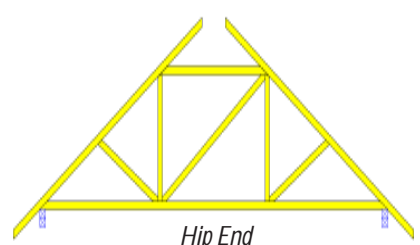
Assymetric 'Room in Roof'



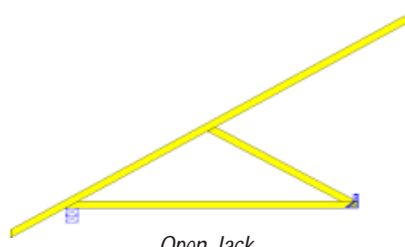
Dormer 'Room in Roof'



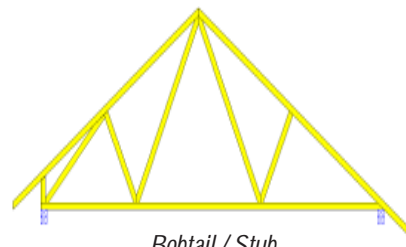
Flat-top 'Room in Roof'



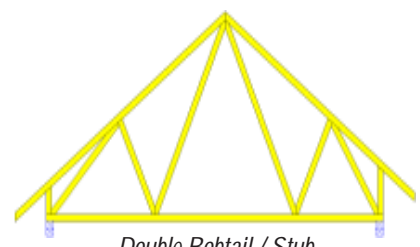
Hip End



Open Jack

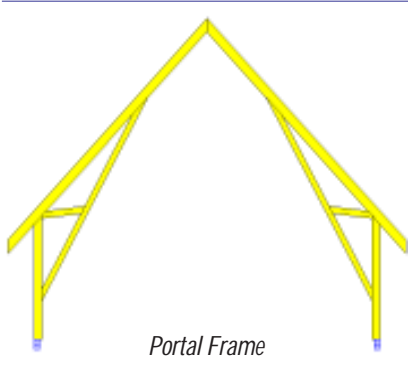
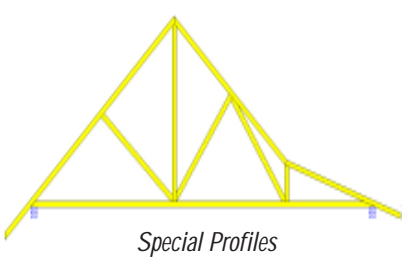
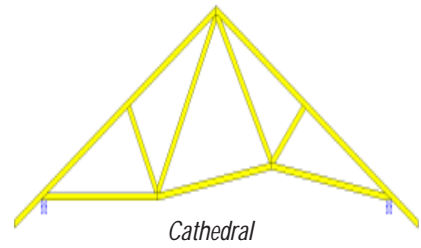
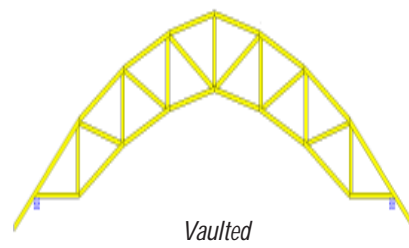
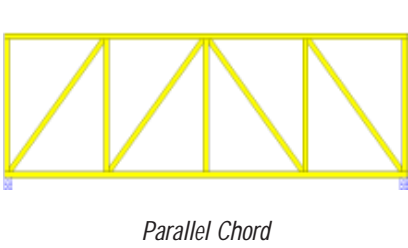
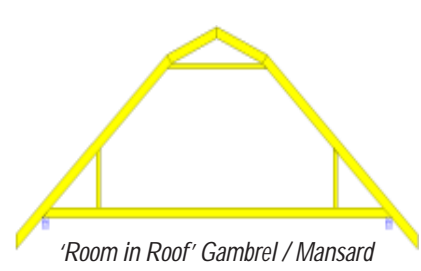
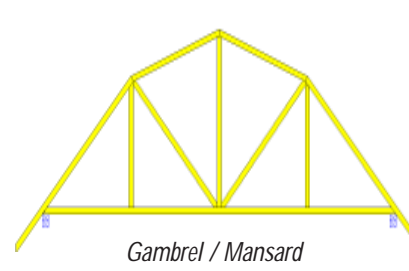
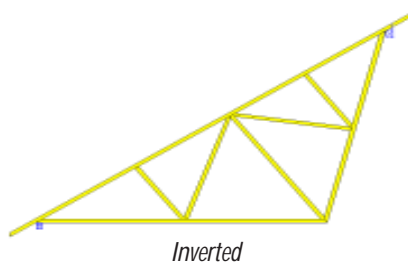
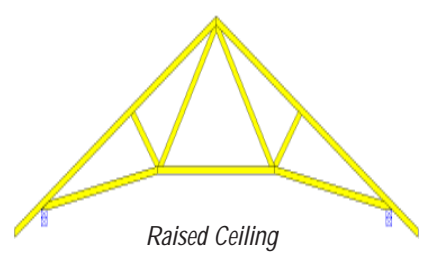
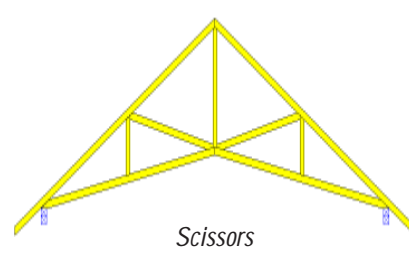
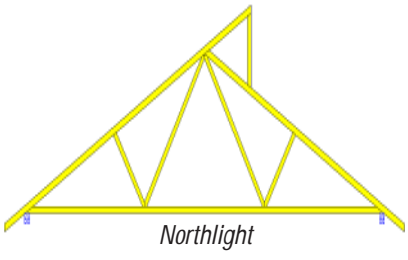
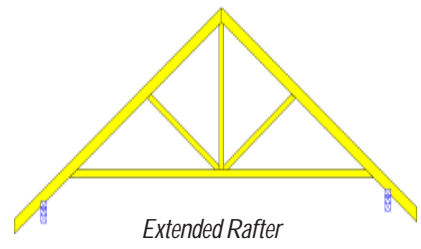
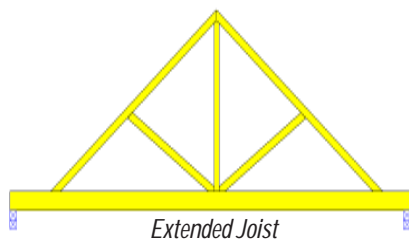
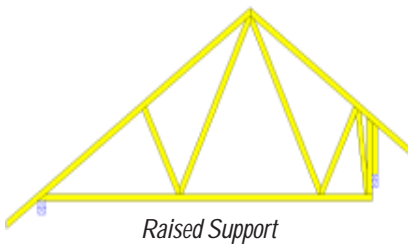


Bobtail / Stub



Double Bobtail / Stub

..... and some more complex examples



This information sheet gives an idea of some configurations available using trussed rafter technology. The configurations shown are not intended to be solutions to specific design requirements and some types may be unsuitable for certain span conditions. However, they are intended to show the flexibility of the system but readers are advised to discuss their particular design situations with their specialist trussed rafter supplier.

The guidelines contained within this information sheet are given in good faith but without liability and its use shall be entirely at the risk of the user.



Trussed Rafter Association

PO BOX 571
Chesterfield
S40 9DH

Telephone & Fax: 01246 230036
e-mail: info@tra.org.uk
website: <http://www.tra.org.uk>